

# APPRESSKI

Issue 11 Winter 2015/6

Priceless

## AUSTRIA

the definitive guide for skiers  
& snowboarders on the piste

**EXPLORE...**

**KITZBÜHEL**

**ST. ANTON AM ARLBERG**

**SÖLDEN**

**HINTERTUX – GLACIER STYLE**

**ALTITUDE FESTIVAL 2016**

**HIGH ON LAUGHTER IN  
THE ZILLERTAL VALLEY**

**DISCOVER...**

**APRES SKI BARS & CLUBS IN  
THE AUSTRIAN TIROL**

**SHOPPING . PROPERTY . FASHION . ENTERTAINMENT . TRAVEL . HEALTH & BEAUTY . EVENTS**

# ALTITUDE

Comedy Festival

11TH-15TH JANUARY 2016 > MAYRHOFEN, AUSTRIA

WEEK WRISTBAND = €260  
VIP WRISTBAND = €400



**KATHERINE RYAN  
MARCUS BRIGSTOCKE  
BEARDYMAN**

**JOHN BISHOP  
SEAN LOCK  
JIM JEFFERIES**



**MICHAEL MITTERMEIER  
ANDREW MAXWELL  
STEPHEN K AMOS**

## THE WORLD'S NO.1 ALPINE COMEDY FESTIVAL

WRISTBANDS & TICKETS AVAILABLE FROM THE EUROPAHAUS, MAYRHOFEN

**LUISA OMIELAN  
JOEL DOMMETT  
DANIEL SLOSS  
ABANDOMAN**



**SOFIE HAGEN · PHIL NICHOL  
ALEX EDELMAN · JAMALI MADDIX  
ALFIE BROWN · KAI HUMPHRIES  
ANDRE VINCENT · JENNY BEDE  
MATT REED · AMY HOWERSKA  
FORREST SHAW · INTERNATIONAL IMPRO ALLSTARS**

10TH ANNIVERSARY!

LIVE  
**COMEDY**

IN  
*Mayrhofen*



**BOOK  
NOW!**

[ALTITUDEFESTIVAL.COM](http://ALTITUDEFESTIVAL.COM)

@ALTITUDECOMEDY #ALTITUDE16

[FB.COM/ALTITUDECOMEDYFESTIVAL](http://FB.COM/ALTITUDECOMEDYFESTIVAL)





Welcome / Servus

Another warm as Gluwein welcome to our eleventh issue of *Après Ski: Austria* – the free magazine with its glossy finger on the pulse of the piste.

In this Winter 2015/16 edition we'll be exploring some of the most treasured gems in the Austrian Alps.

We feature the Tyrolean greats, St. Anton am Arlberg, Kitzbühel and Sölden – and take a tour of the Hintertux Glacier (Emotions in White). 3,250 Metres above sea level.

We preview the Altitude Festival, the happening comedy festival in the Zillertal Valley. With another great line-up, in it's 10th Anniversary year...

Austrian *Après Ski* is special. In this issue we see why; so here's to a warm Tyrolean hospitality. Here's to Weiss beer, Music, Laughter and Life in the Austrian Tirol!

*David Hall.*



David Hall  
Publisher

A Big thanks to James at Redhead Design.

Publisher: David Hall.

Advert Sales: Melanie Merryweather.  
David Hall.

**Copyright:** All Rights Reserved. The views and opinions expressed by contributors to this magazine may not necessarily represent the views of *Après Ski Magazine*.

**Après Ski Magazine Ltd**  
Publishers of *Après Ski Magazine*  
the definitive guide for skiers and snowboarders on the piste.

Mobile +44 7752 198000  
Austria Tel: 06605 177705  
david@apresskimagazine.com  
www.apresskimagazine.com

Designed by Redhead  
Tel +44 1273 602440  
www.redheaddesign.com

Images: Thanks to Get Involved for the front cover image & other images used within the Altitude festival feature.

St Anton am Arlberg feature images courtesy of St Anton am Arlberg Tourismus.

# CONTENTS



Page 5-8



Page 15-16



Page 21-22



Page 25-26

<b>ST. ANTON AM ARLBERG FEATURE</b> .....	<b>5-8</b>
<b>MARIO MAX SKI PROFILE</b> .....	<b>11</b>
<b>SKI ARLBERG SKI MAP</b> .....	<b>12</b>
<b>KITZBÜHEL SKI MAP</b> .....	<b>14</b>
<b>KITZBÜHEL FEATURE</b> .....	<b>15-16</b>
<b>STAMPERL APRES SKI BAR</b> .....	<b>17</b>
<b>HINTERTUX - EMOTIONS IN WHITE</b> .....	<b>19-20</b>
<b>SÖLDEN FEATURE</b> .....	<b>21-22</b>
<b>ALTITUDE FESTIVAL</b> .....	<b>25-26</b>



---

**THE NIGHT CLUB IN ST. ANTON**

---



---

**DORFSTRASSE 11**  
**6580 ST. ANTON ARLBERG**

---





# QUESTIONS TO A WINTER SPORTS RESORT

HOW MANY LIFTS ARE THERE IN OPERATION? DO YOU HAVE TO QUEUE? ARE THE SKI HUTS COSY? WHAT ABOUT THE SKIING COURSES? THESE ARE TYPICAL OF THE QUESTIONS THAT HOLIDAY-MAKERS AND POTENTIAL VISITORS WANT TO ASK BEFORE THEY COME. ST. ANTON AM ARLBERG TOURIST OFFICE PROVIDES THE ANSWERS:

## SKIING SLOPES

### HOW LONG ARE THE SKI RUNS?

The St. Anton am Arlberg skiing region has 350 km marked ski runs and 200 km off-piste options.

### HOW CAREFULLY ARE THE PISTES GROOMED?

Drivers and their 31 tracked vehicles and snow-grooming attachments are out on the slopes for about eight hours every night - and in the morning hours when conditions require additional grooming.

### IS ARTIFICIAL SNOW EQUIPMENT USED IN ADVERSE WEATHER CONDITIONS?

V158 snow cannons and 109 snow "lances" have been installed in the St. Anton am Arlberg skiing area to ensure dependable skiing conditions on the following runs: Galzig - Zammermoos - St. Anton, Galzig Plateau, Osthangeinfahrt, Galzig - St. Christoph, Gampen - Zammermoos, Gampen - Standard, Kapall - Gampen - St. Anton, Arlenmähder, Steissbachtal, Fang - Nasserein, Rendl top station - St. Anton, Rendl - Gampberg, Rendl - Maass, Rendl - Riffel I (total of some 90 km). In total 80% of the piste area in St. Anton/St. Christoph can be covered by man-made snow. Slopes exposed to the sun also have additional snow layers applied. The expense of making snow could be strongly reduced. The reason for this is the large quantity of snow meltwaters which drain away from the gigantic

reservoir of the St. Antoner power station into the Rosanna river. There the river water is pumped out directly to the snow cannons and snow lances in the skiing area. At optimal temperatures they can create an up to 50 centimetres thick snow layer on the slopes - all within 100 hours.

### DOES THE ARTIFICIAL SNOW EQUIPMENT COMPLY WITH CONSERVATION REQUIREMENTS?

St. Anton am Arlberg's artificial snow equipment complies with the applicable nature conservation requirements and regulations. The "artificial" snow consists exclusively of drinking water and fresh air. By covering the meadows with artificial snow the grasses and roots are protected from damage and frost. The agriculture promotes mechanical snow making for the protection of the vegetation, not a disadvantage either is the later snow melt as it reduces the spring dryness effect.

## LIFTS

### HOW MANY LIFTS ARE THERE, AND WHAT IS THEIR CAPACITY?

The Arlberg Ski Pass is valid on 97 mountain railways and ski lifts in the skiing areas of St. Anton, St. Christoph, Stuben, Pettneu, Lech, Warth-Schröcken, Zürs and Klösterle (Sonnenkopf). The transport capacity is 153.571 persons per hour.

### HOW ARE THE TICKET CHECKING PROCEDURES?

The ARLBERG CARD, an electronic and remote ski pass enables easier and faster access to all lifts and cable cars. Data are read out from the chip card via radio signal. And by the way: Lift passes can also be easily purchased in numerous accommodations.

## SKI HUTS

### HOW MANY SKI HUTS ARE THERE?

Eighteen ski huts and mountain restaurants, some of them self-service.

### ARE THERE ALSO SUN TERRACES?

In the course of the season the region enjoys between 50 and 60 sunshine days - perfect weather for relaxing on the sun terraces at: Rendl, Galzig, Gampen, Rodelalm, Sennhütte, Ulmerhütte, Bifangalm, Kaminstube, Heustadl, Krazy Kanguruh, Taps, Mooserwirt, Griabli, Hospizalm and Taja St. Christoph.

### WHICH ARE THE MOST POPULAR DRINKS AND DISHES?

Most people quench their thirst with soft drinks, "Almdudler", apple juice, beer, "gespritzter" wine (half wine, half mineral water) and other wine mixtures, mulled wine, tea with schnaps, or straight schnaps. The typical regional dishes served here are "Tiroler Gröstl", "Käsespätzle", "Wiener Schnitzel", "Kaiserschmarrn" and "Apfelstrudel".



## SKI SCHOOLS

### HOW MANY SKI SCHOOLS ARE THERE AND WHAT SKI COURSES ARE AVAILABLE IN ST. ANTON AM ARLBERG?

In St. Anton am Arlberg there are numerous ski schools which offer group and individual instruction, snowboard, carving, freeriding or telemark lessons, cross-country courses as well as children's private school. You can choose between private and group lessons in all ability levels.

### HOW MUCH DOES THE COURSE COST?

A 6 day course with four hours of instruction per day costs, for example, 278 euros, 3 days 185 euros and 1 day 82 euros.

## SKI KINDERGARTEN

### WHEN IS THE SKI KINDERGARTEN OPEN, AND WHO LOOKS AFTER THE CHILDREN?

St. Anton am Arlberg's Ski Kindergarten is open daily (excluding Saturday) from 9 a.m. to 4 p.m. from the beginning of December to about one week after Easter. Trained kindergarten staff look after anything up to 120 children each day. Children must be at least two and a half years of age and should no longer require nappies.

### HOW MUCH DOES THE SKI KINDERGARTEN COST?

Six days' kindergarten with ski instruction, food, beverage and supervision cost 374 euros. All day child care without ski course costs 77 euros per day, plus 16 euros for the midday care including lunch and drinks.

### WHICH CELEBRITIES HAVE LEARNT TO SKI HERE AS TODDLERS?

They include Queen Beatrix of the Netherlands, her sisters Irene, Margit and Christina, Hans Adam, reigning Prince of Liechtenstein, and former downhill World Champion Marina Kiehl, who took her first steps on skis in St. Anton am Arlberg.

## HELICOPTER SKIING

### IS HELICOPTER SKIING POSSIBLE IN ST. ANTON AM ARLBERG?

For environmental reasons, St. Anton am Arlberg no longer permits helicopter skiing. The resort's helicopter is used only for rescue purposes.

## SAFETY

### HOW LARGE IS THE REGION'S MOUNTAIN RESCUE SERVICE?

The Mountain Rescue Service team consists of 30 men, deployed on the Galzig, Valluga, Gampen, Kapall, Rendl and the valley stations.

### HOW MANY STRETCHERS AND RESCUE HELICOPTERS ARE THERE?

There are 15 stretchers and three helicopters.

### ARE AVALANCHES SOMETIMES BLASTED FOR SAFETY REASONS?

Throughout the region, avalanches are blasted when necessary. The blasting is carried out manually, by ropeway or by helicopter.

### ARE THERE CONTACT PERSONS DIRECTLY ON THE SLOPE?

The multilingual Info-Team of the cable cars tours the St. Anton skiing area on a daily basis and provides information, tips and expert advice, and can call for help in case of emergencies.

### WHICH ARE THE MOST DEMANDING RUNS?

The most demanding runs are the steep slope on Schindlerkar, the Kandahar Run on the Galzig and the Gampberg run on the Rendl.

### HOW MANY DOCTORS ARE THERE IN THE RESORT, AND WHERE IS THE NEAREST HOSPITAL?

There are three doctors in St. Anton, one of them a dentist and also a day hospital. The nearest hospital is 30 km (19 miles) away in Zams.

## ALTERNATIVE ACTIVITIES

### WHAT PROPORTION OF YOUR VISITORS DOES NOT GO DOWNHILL SKIING?

About 15 per cent of St. Anton am Arlberg's visitors confine themselves to cross-country skiing, walking, ice skating, tobogganing etc., about 15 per cent only go snowboarding.

### WHAT ARE THE FACILITIES FOR CROSS-COUNTRY SKIING?

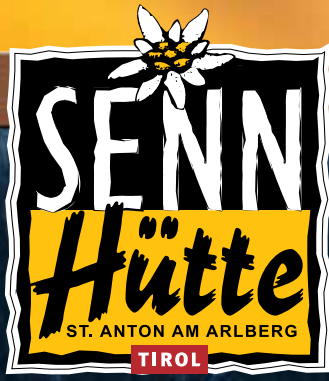
Cross-country skiers have 40 km (25 miles) of trails to choose from. These are groomed daily, or more often when it snows.

### ARE THERE SPECIAL RUNS FOR SNOWBOARDING?

The St. Anton skiing area has many runs which are suitable for snowboarding, but no special slopes reserved for snowboarders. On the Rendl ski area there is a funpark with various jumps.







# Après Ski & Live Music ...



Find us at the  
XXL-leather pants!!!



[SENNsationell.at](http://SENNsationell.at)

Meet friends...



Party time ...



Delicious  
food ...

1

THE SKI HUT on piste

Six times a week Live-Music from 15.00 - 18.00 pm!

### HOW MANY PUBLIC SWIMMING POOLS ARE THERE?

The heated indoor and outdoor swimming pools in the ARLBERG-well.com (centre for wellness and communication). In Pettneu: the Wellnesspark Arlberg-Stanzertal ([www.wellnesspark-arlberg.at](http://www.wellnesspark-arlberg.at))

### IS THERE A SPORT OR LEISURE CENTRE?

The multi-functional sports centre arl.rock in St. Anton am Arlberg offers numerous activities thanks to an adaptable special surface and the functional architecture in the hall: various ball games from tennis to volleyball, squash, bowling, climbing, bouldering etc. A climbing route leads up to the roof of the sports centre.

### ARE PHYSICAL FITNESS AND WELLNESS EQUIPMENT AVAILABLE?

As well as numerous hotels with their own wellness areas guests in St. Anton can benefit from the ARLBERG-well.com center, with its indoor and outdoor pools, current pool and waterfalls, fitness rooms, various types of saunas, steambaths and relaxation areas. Also in Pettneu the Wellnesspark Arlberg Stanzertal offers a variety of recreational possibilities.

### WHAT OTHER LEISURE ACTIVITIES ARE POSSIBLE?

The list includes skating, curling, tobogganing, tennis, squash, tandem paragliding, fitness centre in the ARLBERG-well.com, library, the Museum St. Anton am Arlberg.

## GENERAL

### WHAT IS THE POPULATION OF ST. ANTON, AND HOW MANY REGISTERED TOURIST BEDS ARE THERE?

St. Anton am Arlberg has a population of 2,070 and 11,158 tourist beds. The whole region has a population of 6,090 and 14,518 tourist beds.

### HOW MANY PEOPLE ARE SEASONALLY EMPLOYED IN ST. ANTON'S TOURIST TRADE?

Every year the resort's hotels and inns take on about 1,500 people on a seasonal employment basis - 150 of them chambermaids. In the 450 or so pensions, the proprietress usually does the rooms herself.

### HOW MANY BARS ARE THERE?

There are about twenty bars for enjoying the après ski hours.

### IS ST. ANTON AM ARLBERG ALSO PREPARED FOR GREATER EVENTS AND CONVENTIONS?

The ARLBERG-well.com houses not only a great leisure and wellness area but also an event and congress centre with ultra-modern technology. Up to 3,000 people can easily be catered for during for example, conventions, fairs, presentations, sports and music events.

St. Anton am Arlberg holds its open air events at the world Championship finishing arena. It has a capacity of up to 10,000 spectators.



### HOW MUCH DO THE CHEAPEST AND THE MOST EXPENSIVE ROOMS COST?

The cheapest room (with breakfast) can be had for 30 Euros per person in the off season, the most expensive 5-star hotel (with half board) costs 525 Euros per person in the peak season.

### HOW DOES THE TOURIST OFFICE'S ACCOMMODATION AND INFORMATION SYSTEM WORK?

The Tourist Office has its own computerised information system and can provide details of available accommodation at any time, by telephone or by mail. Information on accommodation is also available on [www.stantonamarlberg.com](http://www.stantonamarlberg.com).

## ROAD TRAFFIC

### CAN YOU DRIVE INTO THE CENTRE OF ST. ANTON OR DO YOU HAVE TO LEAVE YOUR CAR ON THE OUTSKIRTS?

The centre of St. Anton is closed to traffic. There are approximately 2,000 parking spaces available on the bypass, on the secondary school square, at the former Rendl station, at the "West", "Mitte" and "Ost" car parks and on the outskirts of the resort.

Further information is available from the information bureau St. Anton am Arlberg under +43 (5446) 22690, or visit [www.stantonamarlberg.com](http://www.stantonamarlberg.com)







## HAPPY VALLEY

STEAKHOUSE & BAR

*BURGER, RIBS, WINGS,  
LIVE MUSIC, DJ & COCKTAILS*



## ANTHONY'S

PIZZERIA & COFFEESHOP

*PIZZA, PASTA, SALADS, COOKIES,  
CAKES, SOUPS & TAKE AWAY*

RESERVATIONS: +43 5446 42600 • [WWW.ANTHONYS.AT](http://WWW.ANTHONYS.AT)



# DON'T BE LAZY, COME ON KRAZY!

ENJOY OUR SUNNY TERRACE (SUN ONLY PROVIDED DURING DAYLIGHT), PARTY HARD ON THE LARGEST OPEN-AIR DANCE FLOOR OF THE ARLBERG TO THE GREAT TUNES OF INFAMOUS DJ PARTYHARD (THE NAME SAYS IT ALL ...) AND BE STUNNED BY THE UNBELIEVABLE CHOICE OF DRINKS, DELICIOUS FOOD AND SEXY PARTY PEOPLE (PUN INTENDED).

FIND US ON SLOPE 21 AND BE KRAZY ON THE ROCK, FROM 10 TO 8 O'CLOCK!

THE BEST APRES SKI BAR IN ST. ANTON  
info@krazykanguruh.com · www.krazykanguruh.com

**Krazy  
Kanguruh**

by Mario  
Mab





# INTERSPORT<sup>®</sup> ARLBERG

SPORT TO THE PEOPLE

LET ME  
**RENTERTAIN**  
YOU



Free  
exchange and free  
ski service every day  
**7 RENT NETWORK  
STATIONS IN  
THE SKI-AREA**

FREE WLAN  
In all Network Shops

## Service benefits

- Free exchange
- Free ski service everyday
- Ski 7 days - pay 6 days
- Kids up to 10 years rent free\*  
Youngsters up to 14 years pay half price
- Test & Buy\*\*

\* When parents rent skis or snowboards, their kids 10 years and younger, get their skiing equipment (skis, boots, poles and helmets) for free for the same period of time.

\*\* At INTERSPORT ARLBERG you can play it safe before you buy and test out your dream model - not just skis but boots. With Test & Buy up to two days of hire charge is deducted from the purchase price. Buy your skis and boots risk-free - ask our staff about Test & Buy!

Sport Pangratz & Ess GmbH  
A-6580 St. Anton am Arlberg, Dorfstraße 1  
Phone +43 (0)5446-34533  
info@intersport-arlberg.com  
www.intersport-arlberg.com



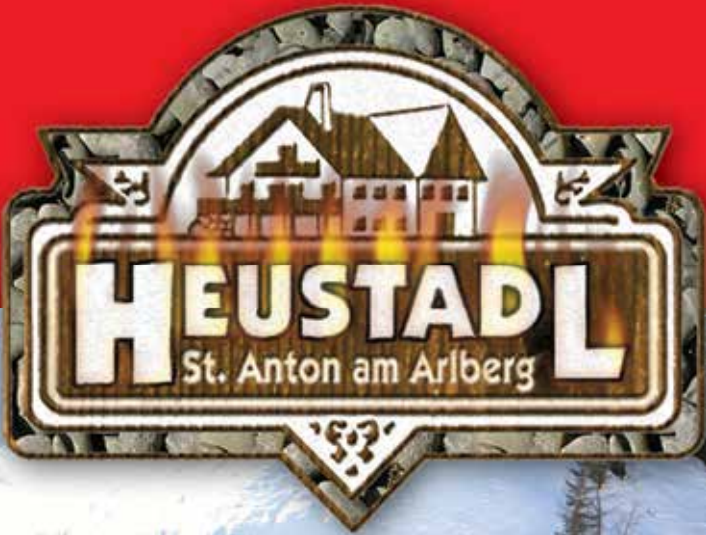




# SKI ARLBERG







APRÈS SKI WITH  
LIVE MUSIC



LET'S ROCK

AND POP

1 IN THE

STADL

THE Nr. 1 ON THE

1

[www.heustadl.com](http://www.heustadl.com)  
Tel.: +43664 501 6635







# KITZBÜHEL IN WINTER.

Kitzbühel is a winter holiday destination that can boast both a past steeped in tradition and a present oozing glamour and charm. This Alpine resort is a sporting legend that has successfully written skiing history. Its location and climate have supplied perfect skiing conditions for 120 years. In addition, it hosts numerous special events, such as the world-famous Hahnenkamm race. But even away from the ski slopes, Kitzbühel in winter has a lot to offer.

## IT HAS ALL THE FACILITIES NEEDED FOR UNLIMITED FUN ON SKIS.

Easy access, a long winter and high snow assurance are what give the Kitzbühel Alpine region its distinctive appeal. The Kitzbühel ski region gets snow right down into the valley from December to April. Nestling between the Kitzbüheler Horn and the Hahnenkamm, it enjoys a favourable north-west orientation. A particular regional micro-climate gives the mountains a covering of grass up to an altitude of 2,000 metres, and so only small quantities of snow are required for those winter sports fans who want boundless fun on the slopes.

Kitzbühel ski region can offer no fewer than 68 superbly groomed descents at all skill levels. Total length = 173 kilometres. New attractions for the

2015/16 season include the 2-seater chair lift on the Bichlalm and the Brunn 8-seater high-speed chair lift with weather hood and comfortable heated seating. The 54 ultra-modern cable cars and lift systems allow convenient access to all pistes: from easy sections to fast descents, e.g. the Steinbergkogel north slopes. Thanks to the 3S-Bahn, a spectacular three cable loop ropeway, it's now possible to reach the snow-assured Pass Thurn mountains quickly and simply.

## ALPINE BOARD SPORTS À LA CARTE: FROM LEISURE CARVING TO CROSS-COUNTRY.

The wide range of deep-snow descents, mogul slopes, plus the opportunities for leisure and race carving, gives both beginners and more advanced skiers the ultimate in winter enjoyment.

Snowboarders and off-piste skiers can look forward to 36 kilometres of waymarked ski routes through unspoilt countryside. The easy-to-reach back country with its impressive deep-snow descents, such as the Bichlalm area or the Zweitausender, is best explored in the company of trained ski and mountain guides. Skaters and cross-countryers will find the sporting challenges they crave on the hundreds of kilometres of groomed trails and winter walking trails around the Wilder Kaiser. The most impressive views are to be had on the ski-assured high-altitude Pass Thurn cross-country trail at 1,200 metres above sea level. Access to all cross-country trails in and around Kitzbühel is free of charge for all winter sports enthusiasts.





### GET CLOSE UP TO THE STREIF AND SAMPLE THAT WORLD CUP MOMENT.

Even the Streif, the world's most spectacular ski slope, is open to skiers in winter. However, if you want to follow the course taken by the world's top exponents, you must be very experienced. The key sections, such as the Mausefalle, the Steilhang or the Hausbergkante, are designated as "extreme ski routes" and are intended solely for the most proficient of skiers. These difficult sections are bypassed on the red Family Streif. Beginners can test themselves out on the Mini-Streif, a skill trail at the foot of the Hahnenkamm descent. There's the chance to experience that genuine World Cup sensation on the Ganslernhang, one of the last classic World Cup slalom sections.

### ENJOYMENT, RELAXATION & VARIETY – EVEN IF YOU'RE NOT ON SKIS.

No fewer than 56 cosy mountain huts between then Hahnenkamm and Resterhöhe, some of them easily accessible by car even without ski equipment, offer stunning sun terraces with picturesque views and traditional regional cuisine. And then after an active day in the snow, Kitzbühel's legendary après-ski strip is the perfect place to be.

If you've come to Kitzbühel and you're not into skiing, then there's tobogganning, snowshoe walking and horse-drawn sleigh rides. Or perhaps you'd just prefer to take a stroll through the picturesque town centre.



### RELAXATION IN KITZBÜHEL: SHOPPING, WELLNESS AND GOOD OLD-FASHIONED KITZBÜHEL HOSPITALITY.

The face this winter sports mecca presents to its guests is both tradition-aware, cosmopolitan and the ultimate in cool. In the lanes of this 700-year-old town centre or in Kitzbühel's exclusive hotels, guests can experience city sophistication, enjoy typically Tyrolean hospitality in quaint guesthouses and

can go on an extravagant shopping spree in the many international designer boutiques.

Kitzbühel's wellness offering will impress even the most well-travelled guests. When it comes to well-being, the countless spas are continuing to develop a wide range of treatments and products, all applied by highly-trained specialists. In addition, the pure, high-altitude air plays its part in relieving stress and also in recharging batteries.

And then there's food and drink: Kitzbühel has everything from down-to-earth, regional fare to international haute cuisine. Many award-winning chefs, plus many outstanding delicatessen shops, meet the demand for top treats for the taste-buds.

Late-night revellers will find no shortage of bars, clubs and other trendy hang-outs. A visit to the casino in the town centre could also be a rewarding experience. It brings entertainment, gambling and lifestyle leisure pursuits altogether under one roof.

### CHRISTMAS, SPECIAL EVENTS AND WINTER HIGHLIGHTS.

As well as the wide winter sports offering, the town is also a popular venue for events, which give ample cause to visit Kitzbühel. There's Kitzbüheler Advent, the traditional Christmas market in the town centre or the New Year's firework display on the Rasmusleiten, both of which show off the idyllic town's romantic side. Other sophisticated and international events include the Hahnenkamm race and the Valartis Snow Polo World Cup. One particular highlight is the Mercedes 4MATIC Experience, an event which runs throughout the whole of winter. It gives enthusiasts the opportunity to watch the German car manufacturer's latest models undergoing testing.

All events at a glance: [www.kitzbuehel.com/de/events-lifestyle](http://www.kitzbuehel.com/de/events-lifestyle)

### WINTER IN KITZBÜHEL IS FOR EVERYONE.

With so many major attractions, Kitzbühel has become a very popular holiday destination – for guests from home and abroad, for celebrities and for people who shun the limelight, for passionate winter sports fans, for culture vultures, for nature lovers, for couples, for singles and also for families. The Gamsstadt (another name for Kitzbühel), together with its holiday villages, lays on an exciting winter programme for families and their younger guests: from the game park in Aurach to the Aquarena, not to mention the special skiing lessons for children, toboggan adventures and lots more.

From friendly bed and breakfasts, family hotels or exclusive five-star hotels – with this very wide range of hotels in all categories, every guest in Kitzbühel will find just the right accommodation for their Alpine winter holiday.



### KITZBÜHEL – A WINTER SPORTS DESTINATION WITH A LONG TRADITION.

Kitzbühel can look back at a long winter sports tradition and so can justifiably describe itself as one of ski sports' birthplaces. As early as 1893 Franz Reisch made the first descent of the Kitzbüheler Horn. This pioneer is therefore regarded as the founder of modern skiing, setting in train the boom in winter sports. In the following years more and more local people and guests took pleasure in this new sport. Kitzbühel, which up until then had been been a popular spot for summer holidaymakers, quickly made the transition to Austria's first winter sports destination.

The Kitzbüheler Ski Club (K.S.C.), probably the most famous ski club in the world, was founded. Together with the Hahnenkamm race, which took place for the first time in 1931, the K.S.C. helped to put the town on the map as the Alpine sports town. In 1966 an important chapter in skiing history was written on the notorious Streif downhill, when the idea of the World Cup was conceived on the Seidlalm. The next year saw the first Hahnenkamm World Cup event. Now every year thousands of fans make the journey to Kitzbühel to see which athlete can cover the Streif and the slalom on the Ganslernhang in the fastest time. A very special place in skiing history belongs to Austria's legendary 1950s ski team of Toni Sailer, Ernst Hinterseer, Hias Leitner, Anderl Molterer, Fritz Huber und Christian Pravda. Sailer, above all, achieved enormous popularity and was to become the first winter sports global superstar.

For all the information you need about the winter holidays in Kitzbühel, please see [www.kitzbuehel.com](http://www.kitzbuehel.com)



# Stamperl

## THE FINAL DESTINATION

Apres-ski at the Stamperl, the final destination at the bottom of the Hahnenkamm, serving local beers and wines and fine traditional Austrian fayre.

Jochberger Str. 62, 6370 Kitzbühel. Tel u. Fax: (+43) 5356-62 555  
[www.stamperl-kitzbuehel.at](http://www.stamperl-kitzbuehel.at)





# 100 % Snow Garantie

on the Hintertux Glacier!

im Zillertal  
**TUX**  
Finkenberg  
850 - 3250 m



## Special ski packages

...7 nights b&b and 6 day ski pass from £ 316,00 p.P.

**Direct flights to Innsbruck** from London,  
Bristol, Birmingham, Edinburgh, Manchester,  
Newcastle, Nottingham, Southampton

Tourist board Tux-Finkenberg  
A-6293 Tux, Lanersbach 401  
Tel. +43/(0)5287/8506, Fax +43/(0)5287/8508  
e-mail: [info@tux.at](mailto:info@tux.at), [www.tux.at](http://www.tux.at)

**Book now! [www.tux.at](http://www.tux.at)**

**Tirol**



**Zillertal.at**

**Hintertuxer  
Gletscher**

ZILLERTAL-TIROL

... 3000 m über dem Meer





# EMOTIONS IN WHITE!

**AT THE HEART OF THE TUX AND ZILLERTAL ALPS LIES THE MOST BEAUTIFUL TYROLEAN HIGH MOUNTAIN VALLEY, THE TUXERTAL VALLEY. A 100% SNOW GUARANTEE GOES WITHOUT SAYING HERE, BECAUSE THE ALTITUDE OF 850 TO 3,250 METERS ABOVE SEA LEVEL ENSURES NON-STOP SNOW FROM OCTOBER TILL MAY!**

## A desire for infinity.

With 62 modern lift facilities in five ski areas, which cover a total of 196 kilometres of slope, the Ski- und Gletscherwelt Zillertal 3000 is a superlative ski region. Insiders recommend a piste tour from Penkenjoch-Finkenberg via the Rastkogel ski area to the Eggalm. And last but not least – the amazing Hintertux Glacier! Anyone who wants to complete an entire glacier circuit will have to conquer 15,000 metres in altitude and 60 downhill kilometres in just one day. The artificially snow-covered downhill runs to Tux-Vorderlanersbach, Tux-Lanersbach and Hintertux are pure pleasure for every winter sports fan!

## A desire for powder snow.

Austria's only all-year skiing resort, the Hintertux Glacier, opens up its 60 kilometres of fantastic natural snow ski runs with a guaranteed powder snow coating from October till May. The magnificent view of the surrounding 3000 m peaks provided from the panorama terrace at 3,250 m above sea level and 365 days of skiing and snowboarding fun each year make the Hintertux Glacier the "world's best glacial ski resort". The newly opened Spannagelhaus and the Tuxer Fernerhaus, featuring the table service restaurant "Wirtshaus zum Tuxer Ferner", invite you to stop off and enjoy great catering services!

## A desire for winter feeling.

A total of 28 km of prepared cross-country ski tracks and 2 natural ice skating rinks with curling alleys in Tux-Lanersbach and Finkenberg provide winter sport enthusiasts great off-slope alternatives. Three illuminated natural toboggan runs featuring traditional mountain huts and restaurants, such as the Höllensteinhütte, the Grieralm and the Bichlalm, which add an extra portion of conviviality to your holidays. 68 kilometres of cleared winter hiking trails ensure wintry variety. Exploring the pristine winter landscape with modern snowshoes, experiencing pure nature, breathing in the fresh, healthy air and simply soaking up the tranquil calm to top up one's batteries for everyday life; that's winter wellness in Tux-Finkenberg.







### A desire for Alpine fun.

Relax, chill out and savour the rays of sunshine! The 30 ski huts and restaurants with sun terraces in the Ski- & Gletscherwelt Zillertal 3000 deserve their 'traditional & authentic' or 'stylish & trendy' titles. The party bars and discos run at full throttle till deep into the night and the party beat goes on till dawn.... The event programme of the upcoming winter also has lots in store, whether in the hotels, bars or at the Tux-Center. Masterly acrobatic feats performed by the Tux ski schools can be seen again at the "Fire on Snow" ski show in the Arena Hinteranger in Tux-Lanersbach. The Nightliner takes all party animals, culture fans and revellers quickly and comfortably through the Tux and Finkenberg event mile.



### A desire for family fun.

The top station of the Eggalm lifts features a Kinderpark with ski carousel, magic carpet, baby lift and snowtubing to give the kids their first taste of snow fun. The Family-Park Hintertux on the Sommerberg is the ideal location for kids to get a first taste of freestyle fun. Kids will find that learning the skills of skiing and snowboarding at any of the five ski schools is simply child's play. The Tux family specialists also know exactly what the youngest guests need for an action-packed holiday. The "Playarena" is a 1,000 m<sup>2</sup> large indoor games hall, that awaits younger guests with an action-packed fun and animation programme and lots of cool attractions. Hence, boredom is foreign to Tux-Finkenberg!



### Tux-Finkenberg has so much to offer:

---

Free sports bus, toboggan bus

---

Nightliner

---

196 km of slopes - 599 ha of slope surface

---

62 lifts - capacity 115,655 persons per hour

---

Powder snow from October to May

---

100% snow guarantee throughout the year

---

365 days skiing operation per year

---

### A desire for parties and events.

---

11.12.2014

---

Mountain Advent in the Tuxertal valley

---

30.12.2014

---

Children's pre New Year's Eve party in Tux-Lanersbach

---

04.01.2015

---

Christmas and New Year's Concert by the Wiltener Sangerknaben (boys choir)

---



**FIRE ON SNOW: Every second Monday at the Arena Hinteranger in Tux-Lanersbach**

**To find out about events in the entire region, check out [www.tux.at/events.htm](http://www.tux.at/events.htm)**



# SÖLDEN: A VIEW TO AGENT 007

**THANKS TO ITS UNIQUE APPEARANCE IN "SPECTRE", THE 24TH JAMES BOND MOVIE, SÖLDEN RANKS AMONG THE MOST EXCLUSIVE AGENT 007 FILM SHOOTING LOCATIONS WORLD-WIDE. A TRULY ADVENTUROUS LIAISON BETWEEN THE SECRET SERVICE AGENT AND THE HOT SPOT IN THE ALPS, REACHING FAR BEYOND THE MOVIE SCREEN. THIS WINTER SOME 200,000 SKI PASSES ARE AVAILABLE IN NOBLE 007 DESIGN BY POINTING OUT SÖLDEN AS A BOND FILMING SPOT.**

A highly successful premiere for both Daniel Craig and Sölden. For the very first time the famous actor played the Agent 007 role in a high Alpine winter landscape. Daniel Craig was totally enthusiastic about this film shooting place. In the official Behind the Scenes Book - "Blood, Sweat and Bond" - he confirms: "On Spectre we not only visit Mexico, Morocco and Rome but also Austria, which was a wonderful location." Also Michael G. Wilson, producer of the world-famous film franchise, spoke in high terms of Sölden and the respective "Spectre" shooting locations in Sölden: "Cable cars are great for a Bond film."

## UNDER THE SPELL OF THE SECRET AGENT

Which scenes has film director Sam Mendes taken in Sölden? Did all the top actors stay in the Ötztal? For real Sölden and James Bond fans there are still many questions about the original movie shooting locations even after the movie premiere of "Spectre". The [andaction.soelden.com](http://andaction.soelden.com) themed website provides all the necessary information and detailed answers to all questions. Take a look at the Filming Locations, watch Behind the Scenes Clips and take a picture in classic James Bond pose. What's best,

with a bit of luck you can also win attractive holiday vouchers and non-monetary prizes. Following the slogan "A place too good to be bad" also YouTube clips focus on the spy movie by underlining visually all advantages of the unrivaled Hot Spot in the Alps.

## GAISLACHKOGL AS BOND'S FAVORITE MOUNTAIN

Right in the center of all "Spectre" action scenes in Sölden is the famous Gaislachkogel Ski Mountain with its futurist ice Q Restaurant on top of the peak and the state-of-the-art triple rope Gaislachkogel mountain gondola. In order to take full advantage of Sölden's presence in the movie, winter and summer sport fans can take a panoramic ride towards the top in the Bond Cabin. Furthermore, another Bond Cabin on the Gletscherexpress mountain gondola reminds of 007's wild chase on the road to Rettenbach Glacier. The well-loved night skiing event at the middle station of Gaislachkogel (6 Jan 2016 - 31 Mar 2016) focuses on a new ski show program with spectacular action, agents and adventures in a row. Those having a predilection for movie stars are strongly recommended to take a marvelous photo amidst one of the XXL-sized picture

frames within the Sölden Ski Area. The license to ski is included in some 200,000 key cards having a black and white card back in plain design which centers on Sölden as "Spectre" shooting location.

The highly exclusive Designhotel Bergland Sölden was the perfect hideaway for the movie stars during the film shooting. Among the cream of Agent 007's Universe was Daniel Craig, Bond Girl Léa Seydoux, Villain David Bautista, Ben Whishaw as "Q", film director Sam Mendes and Spectre producers Barbara Broccoli and Michael G. Wilson. In compliment to all these celebrities the huge 212 m<sup>2</sup> Suite was renamed James Bond Suite as the main actor Daniel Craig and his wife Rachel Weisz stayed there.

## SÖLDEN'S WORLDWIDE PRESENCE

Thanks to the 007 cult brand Sölden is mentioned in the same breath with metropolis like London, Rome or Mexico City. Millions of cinema fans will experience Ötztal's stunning Alpine mountain scenery close by. In the meantime "Spectre" has already broken varied records at the cinema box offices, especially in England, Bond's home country where the film had the best results ever in its first week after the official release. In Germany a huge number of Bond fans overcrowded the cinema halls on the premiere weekend as "Spectre" was the most viewed Saturday movie ever. In the US the 24th Bond Movie was shown on some 4000 movie screens contemporarily. This was topped only by China: in the Middle Kingdom an incredible number of James Bond fans met in 14,700 cinemas to watch the latest 007 adventure.

[WWW.ANDACTION.SOELDEN.COM](http://WWW.ANDACTION.SOELDEN.COM)









SKI-BUNNIES.COM

NO NEED TO **SKI ALONE**  
THIS WINTER



INVITE A **SKI BUNNY** FOR ON  
AND **OFF-PISTE** FUN



ISCHGL • DAVOS • CHAMONIX • ZERMATT • KITZBÜHEL • WORLDWIDE

**SKI-BUNNIES.COM**

*gorgeous ski companions*

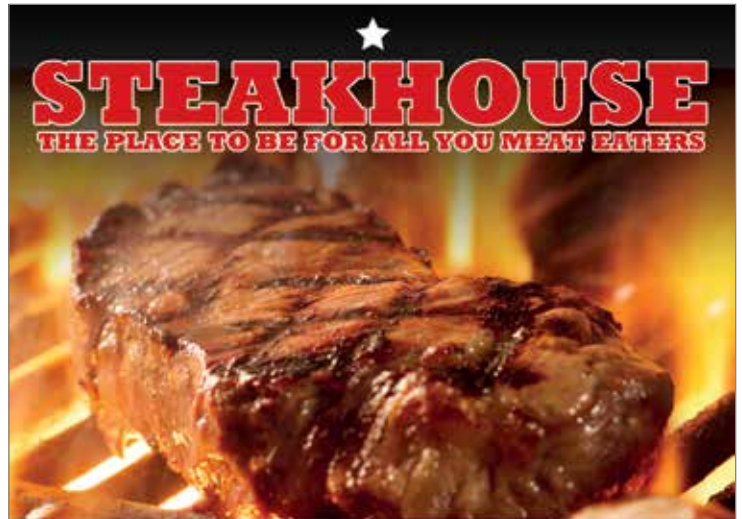




Savour the atmosphere of the American south, with a dash of Mediterranean and Caribbean flair in the middle of Mayrhofen. Our restaurant serves tasty burgers, juicy steaks, delicious pizza, pasta and many more specialities. Enjoy a cool cocktail, the large choice of various spirits, international and local beers at one of our bars. DJ Events and live music will round off your Mo's experience! COME, HEAR and ENJOY!



MO'S ESSCAFE & MUSICROOM | HAUPTSTRASSE 417 | MAYRHOFEN  
TEL +43 -(0)5285-63435 | www.mos-cafe.com | moscafe@aon.at



TRY OUR ENGLISH  
**"MASSIVE MOUNTAIN"**  
 BREAKFAST

A great "mountainous" start to the day



~GREAT STEAKS & LOCAL TYROLEAN FOOD~

HauptStrasse 448, Mayrhofen, A-6290  
 Tel : + 43 5285 62320

Steakhouse  
 RESTAURANT - CAFE - BIER



- Next to the mountain Penken cable car.
- Enjoy great Tyrolean food in our Berggrast restaurant ...
- And for Après Ski visit the "Elchbar" and enjoy the stunning mountain view's.

Berggrast Restaurant – Elchbar  
 Familie Geisler  
 A – 6290 Mayrhofen, Penken 604

Telefon: +43 (0)5285-62881  
 Fax: +43 (0)5285-64780  
 E-Mail: info@berggrast.at

[www.elchbar.at](http://www.elchbar.at)



# NATUREISPALAST

on the Hintertux Glacier

**NEW in summer 2015:**

How about a boat trip?...  
 ...for lovers or for the whole team.

Listen to the noises of the ice giants  
 with the underwater GEO microphone!

Scientific tour - kids tour and  
 adventure tour on request!

Daily tours:  
 from 10:30 am until 2:30 pm

**HIGHLIGHTS**

- ice palace with huge icicles
- view in the research well
- glacier lake - 35 m under the slopes
- for families: „Tuxer Riese & Salige Fräulein“
- seminar room - workshops and trainings

[www.firmenevent.at](http://www.firmenevent.at)

[www.natureispalast.info](http://www.natureispalast.info)

[www.natursport.at](http://www.natursport.at)

Information hotline  
 +43 (0)676/3070000



# ALTITUDE

## Comedy Festival

11TH-15TH JANUARY 2016 > MAYRHOFEN, AUSTRIA

### CELEBRATING ALTITUDE'S 10TH BIRTHDAY

# THE BISH IS BACK (AGAIN)!

**JOHN BISHOP \* SEAN LOCK \* JIM JEFFERIES \* KATHERINE RYAN**  
**MARCUS BRIGSTOCKE \* BEARDYMAN \* MICHAEL MITTERMEIER \* ANDREW MAXWELL**  
**STEPHEN K AMOS \* LUISA OMIELAN \* JOEL DOMMETT \* DANIEL SLOSS**  
**ABANDOMAN \* SOFIE HAGEN \* PHIL NICHOL \* ALEX EDELMAN \* JAMALI MADDIX**  
**ALFIE BROWN \* KAI HUMPHRIES \* ANDRE VINCENT \* JENNY BEDE \* MATT REED**  
**AMY HOWERSKA \* FORREST SHAW & THE INTERNATIONAL IMPRO ALLSTARS**

**TICKETS ON-SALE NOW - [WWW.ALTITUDEFESTIVAL.COM](http://WWW.ALTITUDEFESTIVAL.COM)**

Altitude Comedy Festival is delighted to announce that one of the UK's greatest comedians, John Bishop, is back again to headline Altitude's 10th birthday celebrations in the chocolate box surrounds of Mayrhofen, Austria this coming January. And that's not all! We also have Katherine Ryan, Beardyman and Alex Edelman heading down to clowntown to join our most incredible line-up ever, for an amazing five days of action enjoying slopes all day and laughs all night!

John Bishop had such a brilliant time headlining Altitude 2012 that he asked to come back and do it all again in 2013. How could we possibly refuse? Having totally destroyed Mayrhofen, both on and off the stage for two year's running, we're are over the moon that the Bish is back to do it all again for our 10th birthday celebrations. One of the UK's biggest and best comedians, John has been blazing trails both on the live circuit, and on the TV, presenting the Royal Variety Performance and with his own prime time BBC One spot for The John Bishop Show. Seriously in demand, John can sell out arena

tours at the drop of a hat, but this is your chance to catch him up close and personal in the intimate venues of Mayrhofen. Whatever you do, don't miss out.

Also joining Altitude's gargantuan 10th birthday line-up is queen of the acid putdown, Katherine Ryan. Currently host of BBC 2s Hair, London-based, Canadian, Katherine may have come to wider public attention with a string of acerbic appearances on Mock the Week, 8 out of 10 Cats, QI and Have I Got News For You, but she made her name by being one of the best stand ups around. Viciously funny, she's not afraid to take deadly aim at highfalutin celebs, or to let you know just how disastrous her taste in men is. Shockingly good, if you like it near the knuckle, then Katherine's for you.

A veteran of the festival scene, Beardyman knows how to get a crowd bouncing. One of only two acts to have won the UK Beatboxing Championships twice, Beardyman, or Darren to his mum, has racked up tens of millions of YouTube hits for his revelatory skits that take vocal gymnastics to the very limit of human possibility. From dubstep, techno and reggae,

to impersonations of Elvis dressed as a monkey and his viral smash Kitchen Diaries, Beardyman's set is an unpredictable smorgasbord of hilarious madness that is guaranteed to blow you away.

And finally, for now, we're over the moon to announce Alex Edelman will be back in Mayrhofen for our 10th birthday. Always a huge hit with the Zillertal crowd, Alex's east coast-based observations on cultural identity have earned him the admiration of the comedy big boys and won him 2014 Foster's Edinburgh Comedy Award Best Newcomer gong. Deceptively mellow, Alex hits his targets with pinpoint accuracy and is definitely one to catch before his certain rise to the really big leagues.

With some of the world's greatest comedians, including John Bishop, Sean Lock, Michael Mittermeier, Marcus Brigstocke, Andrew Maxwell, Katherin Ryan, Steven K Amos, and many, many more across five fun-packed days in Mayrhofen, one of Europe's most picturesque ski resorts, Altitude's 10th birthday is set to be totally legendary, so book your tickets now, before it's too late.





TICKETS, INCLUDING OUR EXCLUSIVE VIP ALTITUDE TICKET ARE ON SALE NOW.

FULL DETAILS CAN BE FOUND AT [WWW.TICKETLINE.CO.UK](http://WWW.TICKETLINE.CO.UK)

EARLY BIRD FULL WEEK  
FESTIVAL WRISTBAND

**£155**

(PLUS BOOKING FEE)

EARLY BIRD FULL  
WEEK VIP FESTIVAL  
WRISTBAND

**£225**

(PLUS BOOKING FEE)

THE VIP WRISTBAND WILL  
ENTITLE YOU TO:

ENTRANCE TO ALL  
ALTITUDE SHOWS

A FREE BOTTLE OF WINE  
(OR UP TO 4 BEERS) FOR  
THE GALA SHOWS\*

RESERVED SEATING\*\*

MEET AND GREET  
THE COMEDIANS\*\*\*

COMPETE IN THE CLOWN  
HILL RACE\*\*\*\*

ALTITUDE T-SHIRT

\*Please book this with one of the staff  
at the Altitude HQ on your arrival.

\*\* Gala Shows only. \*\*\* VIP's will be  
welcome to the Press Launch Monday  
afternoon. \*\*\*\* During the week we  
will be having the inaugural Comedian  
Down Hill Race, VIP will be allowed  
to take part and race the comedians/  
clowns.

FOR MORE INFORMATION  
ON ALTITUDE PLEASE  
CONTACT CHLOE  
MUNTS CHLOE@  
GETINVOLVEDLTD.COM,  
020 7604 2944

## PERFORMER QUOTES:

"INCREDIBLE, GO!"

- Jimmy Carr

"WHAT A LOVELY GIG...THANK  
YOU TO ALL!"

- John Bishop

"I HAD A GREAT TIME"

- Bill Bailey

"THANKS SO MUCH TO  
EVERYONE INVOLVED WITH  
@ALTITUDECOMEDY IT'S  
HONESTLY BEEN ONE OF THE  
HIGHLIGHTS OF MY CAREER.  
SAD IT'S OVER \*CRIES\*"

- Daniel Sloss

"WELL DONE TO EVERYONE  
INVOLVED ALTITUDE  
COMEDY...GOT A GOOD THING  
GOING HERE! YALDY"

- Kevin Bridges

"I LOVED EVERY MINUTE"

- Sean Lock

"I HAD A FUCKING BLAST.  
CANNOT WAIT FOR NEXT YEAR"

- Rufus Hound

"ALTITUDE FESTIVAL IS  
BLINDING SO FAR. SEEN SOME  
UNBELIEVABLY GOOD COMEDY  
- IT'S BEEN A PLEASURE TO  
PLAY. HAVE TO SAY  
MAYRHOFEN IS BEAUTIFUL"

- Marcus Brigstocke

"MASSIVE THANKS TO ALL  
THE CREW AND ARTIST FOR  
MAKING IT A VERY SPECIAL  
WEEK ...ROLL ON NEXT YEAR"

- Dub Pistols

"PEOPLE, SAVE YOUR PENNIES  
FOR NEXT YEAR'S ALTITUDE  
FESTIVAL, SKIING ALL DAY  
AND 3 AMAZING COMEDY  
SHOWS EACH NIGHT!"

- Andy Smart

## PRESS QUOTES:

"THERE CAN BE FEW NICER  
PLACES TO WATCH COMEDY  
THAN AT THE ALTITUDE  
FESTIVAL"

- Daily Telegraph

"WE'D HAPPILY PUT UP WITH  
THE COMBINATION OF  
ACHING LEGS AND SPLIT  
SIDES AGAIN NEXT YEAR."

- Whitelines

"SKIING, COMEDY, MUSIC. NOT  
A BAD COMBINATION, IN  
ANYONE'S BOOK. HENCE, THE  
FUN HAD AT ALTITUDE FESTIVAL  
THIS YEAR WAS - BY MY MATHS  
- AT LEAST THREE TIMES BETTER  
THAN ANY MOUNTAIN BREAK  
PREVIOUSLY TAKEN"

- The Sun

"ALTITUDE FESTIVAL KEEPS THE  
LAUGHTER LEVELS FLOWING  
LONG AFTER YOU DUST OFF  
YOUR BRUISED AND ACHING  
LIMBS FOR SOME WELL-  
DESERVED APRÈS-SKI AND A  
GLASS OF MULLED WINE"

- Metro

"IT IS NOT OFTEN YOU GET TO  
SEE AN O2 ARENA-FILLING  
ACT IN A 100-CAPACITY  
BAR, SO THIS WAS THE KIND  
OF THING THAT MADE THE  
FESTIVAL SPECIAL."

- Evening Standard

"EVEN IF YOU'RE USELESS AT  
IT SKIING, IT'S STILL WORTH IT  
FOR THE APRÈS"

- Guardian

"I'M ALREADY COUNTING THE  
DAYS TO ALTITUDE..."

- Bruce Dessau, Beyond The Joke

"ALTITUDE FESTIVAL IS WELL,  
WELL WORTH A LOOK. WE  
RECOMMEND IT HIGHLY"

- Maxim

"STORMING GIGS...BRILLIANT  
INTIMATE SETS"

- Chortle

"THE ONE THING TO EXPECT  
FROM ALTITUDE IS THE  
UNEXPECTED - AN UTTERLY  
SURREAL EXPERIENCE"

- The Big Issue



**m**  
**mountain & soul**  
LIFE · STYLE · HOTEL

**soulkitchen**  
BAR · CAFÈ · LOUNGE · RESTAURANT

**EVERY WEEK**  
**Monday, Wednesday,**  
**Friday, Saturday, Sunday**

**DJ &**  
**DINNER**

7.00 pm – 11.00 pm  
**Don't miss it!**



**LIFESTYLE · WELLNESS · EVENTS · CREATIVE CUISINE**



6284 Ramsau 425 | T. +43 676 88632405 | +43 5282 22048 | [info@mountainandsoul.at](mailto:info@mountainandsoul.at) | [www.mountainandsoul.at](http://www.mountainandsoul.at)  
opening hours soulkitchen: 12:00 am to 09.30 pm | daily breakfast: 08:00 am to 11:00 am (please call for reservation)



# LUNCH APRESKI DISCO

Foto: Gettyimages/Bruce Tolbott

Open from  
10.00 am to 8.00 pm.  
Warm meals  
served until 5.00 pm,  
Pizza until 6.00 pm.  
Happy Hour  
3.30 to 4.30 pm.



Find us on **FACEBOOK**  
[www.facebook.com/  
taps.apreski](http://www.facebook.com/taps.apreski)



**BEST PARTY  
HAPPY HOUR  
DJ BENNI  
GOOD FOOD**



**ALL IN ONE  
COYOTE BAR  
HUNTERS CABIN  
VIP-LOUNGE**  
[www.tapscoyotes.com](http://www.tapscoyotes.com)

Right on the Skislope at Gampen-Moos

**st. Anton**  **ARLBERG**